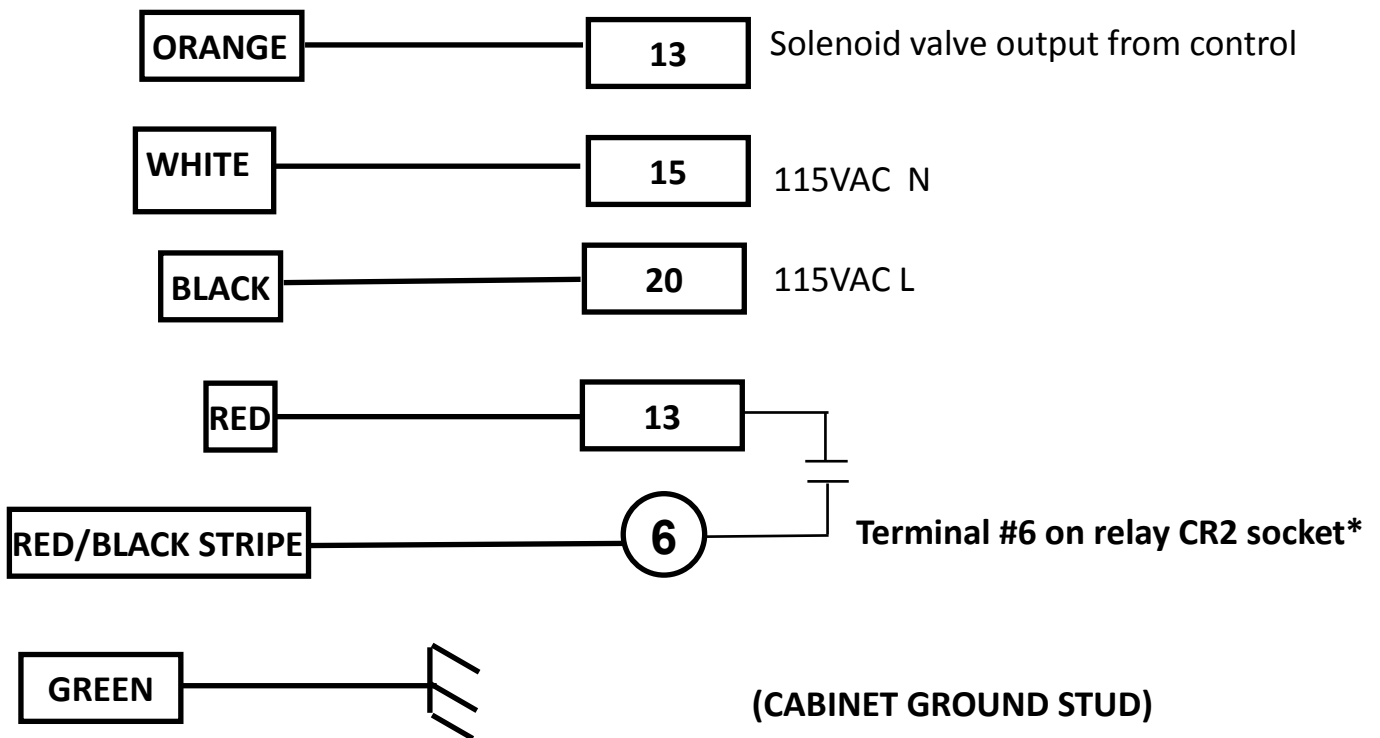


MILLER SSW SOFT TOUCH HOOKUP

1. Connect wires from the SOFT TOUCH cable to the MILLER SSW as shown below.
2. Make the one wiring change in the Miller control as shown below.
3. The original solenoid valve will not be used with this SOFT TOUCH system and should be unwired from the control.
4. Note that both the RED and ORANGE wires will be connected to Miller terminal #13.



***Remove wire that is now between terminal #6 on relay CR2 socket and terminal #13**

