

**DS12** RED  
24 VDC ISOLATED  
INTERNAL  
DC POWER  
SUPPLY  
NORMALLY "ON"

**DS9** RED  
+/-24VDC  
INTERNAL  
DC POWER  
SUPPLY  
NORMALLY "ON"

**DS13** RED  
+6.3 VDC  
INTERNAL  
DC POWER  
SUPPLY  
NORMALLY "ON"

**DS11** RED  
+5VDC  
INTERNAL  
DC POWER  
SUPPLY  
NORMALLY "ON"

**DS18** YELLOW  
END OF SEQUENCE  
(ERROR) RELAY  
"ON" AFTER END OF SEQ.  
(OR ERROR OCCURRENCE)  
"OFF" AFTER 1/4 SEC  
TIME DELAY

**DS1** RED  
TRANSFORMER  
OVERTEMPERATURE  
NORMALLY "OFF"

**DS2** RED  
SCR  
OVERTEMPERATURE  
NORMALLY "OFF"

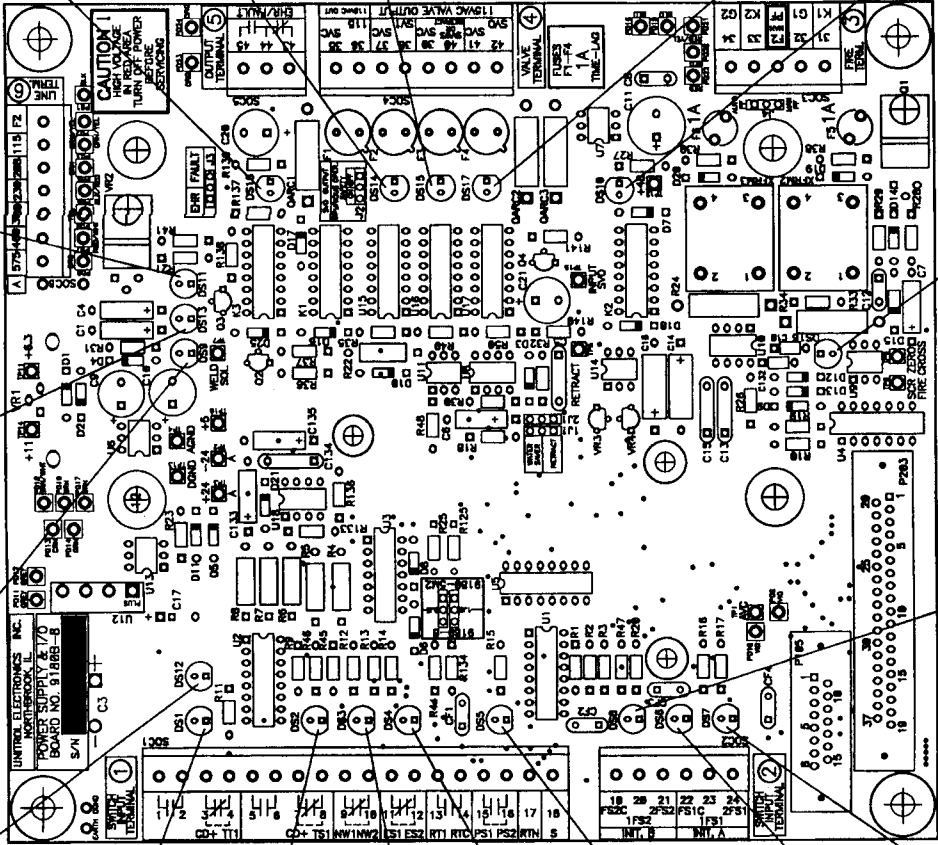
**DS3** RED  
EMERGENCY  
STOP  
NORMALLY "OFF"

**DS4** ORANGE  
RETRACT  
SWITCH  
WHEN INITIATED

**DS5** ORANGE  
PRESSURE  
SWITCH  
SHOULD BE "ON"  
TO ALLOW WELDING

**DS6** YELLOW  
INITIATION "A" or "B"  
STAGE 1  
"ON" WHEN INITIATED

**DS7** GREEN  
INITIATION "A" or "B"  
STAGE 2  
"ON" WHEN INITIATED



**DS14** YELLOW  
VALVE  
OUTPUT 115VAC  
"ON" AFTER INITIATION  
"OFF" AFTER WELD SEQUENCE  
COMPLETION

**DS15** YELLOW  
RETRACT VALVE  
OUTPUT 115VAC  
"ON" WHEN RETRACT  
SWITCH IS "ON"  
"OFF" WHEN RETRACT  
SWITCH IS "OFF"

**DS15** YELLOW  
WATER SAVER VALVE  
OUTPUT 115VAC  
"ON" AFTER INITIATION  
"OFF" AFTER WELD SEQUENCE  
COMPLETION PLUS 1min

**DS17** YELLOW  
INTENSIFIER/CLAMP  
OUTPUT 115VAC  
"ON" AFTER INITIATION  
"OFF" AFTER WELD SEQUENCE  
COMPLETION  
(FOR CLAMP OPTION - DS17  
MAY STAY "ON" PERMANENTLY  
AFTER FIRST INITIATION)

**DS10** RED  
+48 VDC  
INTERNAL  
DC POWER  
SUPPLY  
NORMALLY "ON"

**DS8** ORANGE  
INITIATION "B"  
STAGE 1 or 2  
"ON" WHEN INITIATED

**DS16** RED  
SCR FIRE  
"ON" DURING SCR  
FIRING ONLY

UNITROL ELECTRONICS INC.  
7622 LANDWEHR RD.  
NORTHBROOK, ILL. 60062

Title POWER SUPPLY & I/O BOARD #98108-8

Size Number #1811-L

Scale 0.3125:1 Drawn by G.J.

Partname 91898-8L PCB Sheet 3 of 4